



e-Power Video Tutorials presents:



e-Tips Newsletter

In this Issue

Keith Vincent - p. 1

Eclipse:

Give your Eyes a Break

Wil Wilcox - p. 2

HP Spectre x360



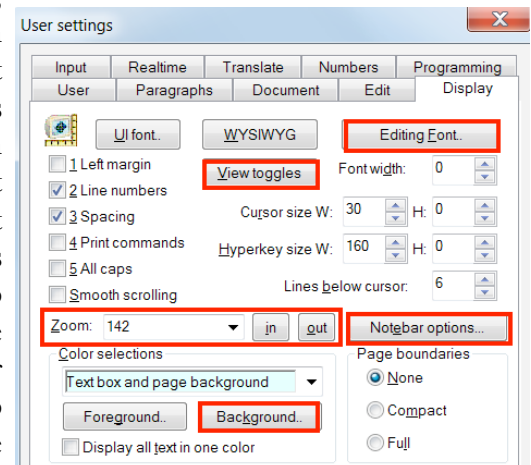
Keith Vincent

Eclipse: Give your Eyes a Break

We spend so much time in front of our computers, it just makes sense to **optimize your display settings in order to reduce eye fatigue**. In every Eclipse training, I find myself showing how to make display changes, and often the reaction is, “Wow, I had no idea you could do that!” Well, these suggestions have been possible for 15+ years, but I’m hoping many readers will consider them eye-openers.

1) In User Settings, Display, use the “**Editing Font**” button to display your text. How about “**Lucida Console**”? It’s darker and easier to read than the default “Courier New”, but it’s still monospaced, so text that needs to line up in columns will not go zig-zaggy. Next to “**Zoom**” you can type a precise number that works well on your screen. You are not limited to 10% increments. Also, in the “**Color selections**,” there’s no need for harsh white for “Text box and **page background**.” I find a pale blue is easy on the eyes.

2) In User Settings, Display, use the “**Notebar Options**” to select a **Bold** version of Lucida Console as the font for your steno or voisteno. Changing the “**Steno width**” from 22 to 18 will make the Notebar not quite so wide, without making the notes harder to read. Also, make sure there’s a check in the box next to “**Dictionary entries**” so you’ll be able to click on things like “M:notes” at the bottom of your notebar and go right to that entry in the appropriate dictionary.



(Continued on page 3)

Upcoming Workshops by Keith Vincent

San Francisco

January 18, 2020

New Orleans

February 29, 2020

Nashville

March 28, 2020

Chicago

April 18, 2020

To check availability, contact Keith at 4kvincent@gmail.com.

Curated Webinar Bundles

We’ve offered dozens of great webinars since 2007.

Check out our catalog:

[EclipseWebinars.com/](http://EclipseWebinars.com/webinars_curated_bundles.php)

webinars_curated_bundles.php

Advantage Software

Tech Support

24/7/365

1-800-800-1759

HP Spectre x360 (Project Athena)



The HP Spectre x360 13 2019 is one of the first notebooks to be released this holiday season that will have stickers on them saying "Intel, Engineered for Mobile Performance." **These Engineered for Mobile Performance laptops are also referred to by the name of Project Athena.**



The requirements to display this sticker are that they must have instant on within one second from sleep, high performance and responsiveness with the new **Intel 10th generation** processors, AI intelligence with far-field microphones for assistants such as Google Assistant or Alexa, great battery life of 9 hours or better and Wi-Fi 6 for connecting to the new high-speed Wi-Fi 6 standard.

Waking from sleep within 1 second is great for when you have just arrived to the job and need to get going instantly. The new Intel 10th gen. processors have great battery life without sacrificing all the power you need to run the most demanding applications.

The artificial intelligence with far-field microphones is another feature of particular note for court reporters. **The far-field microphones are designed to record speakers in the room for 360 degrees**, which is something that could be very helpful for superior audiosync recordings. (My separate USB microphone may well just stay packed away.) You are also going to see more and more integration with Google in the upcoming Eclipse Version 10. More on that in the future.

Battery life of 9 hours or greater is perfect for when you forget your power adapter or are traveling. In a pinch, you can get through a day's proceedings on battery power. That's peace of mind.

Wi-Fi 6 is a new wireless standard we are going to see more and more of. It enables much faster connections than before. Plus, if you are on a public network like in a court or law office with many users on the Wi-Fi, it does not slow down as much. It can handle many more users.

Look for optional Gigabit LTE too. Your laptop would have a slot for a SIM card and connect to a data plan just like your cellphone. If you get the model with the LTE data, you will get HP Network Booster, which allows the **LTE data and the Wi-Fi to both be active** at the same time and virtually guarantee you a solid

Internet connection. I cannot emphasize enough how it helps to turn your laptop on and find it is always connected to the Internet wherever you are. More and more reasons to need this always-on Internet capability will be coming in the future. If you buy one of these laptops now, you will be future-proofing your equipment.



The gorgeous brand new HP Spectre x360 has been certified as "Engineered for Mobile Performance". It is a premium laptop with a premium price. It is beautifully sculpted with "diamond-cut" angles and gold accent. You may need jewelry to accessorize with this.

If you are a Thinkpad fan like I am, know that the Lenovo Thinkpad Carbon X1 will have new models with these specs before the end of the year. I can already see a future e-Tip about the new Thinkpads as well.

The price of the Spectre x360 as I'd configure it at this writing is \$1,709.99. Of course, there may be Black Friday deals as well. If you are interested in the HP Spectre X360, the configuration that I would recommend is as follows:

Nightfall Black, Windows 10 Pro 64, Intel® Core™ i7-1065G7, Intel XMM 7560 LTE-Advanced Pro, 13.3" FHD IPS display. Please note that if you get the FHD IPS display, you will get much longer battery life than with the OLED display, which would be very nice if you plan to watch lots of videos and/or play videogames.

For a **video review** of the HP Spectre x360, search on **YouTube for HP Spectre x360 13 fixed!** or type www.youtube.com/watch?v=9R0R5RQrTd4.

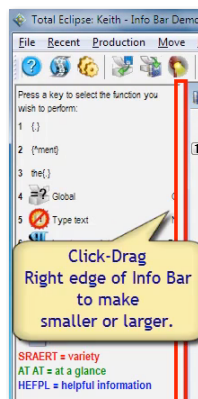
Give your Eyes a Break

(Continued from page 1)

3) In User Settings, Display, “**View Toggles,**” make sure there’s a check next to “**Info bar**” and “**AutoMagic.**” That’s especially important to see the quick corrections offered by the Proofreader. Choose a **font** in a size that works well on your screen. For me, Arial Narrow Bold works well, but the font choices depend on your computer.

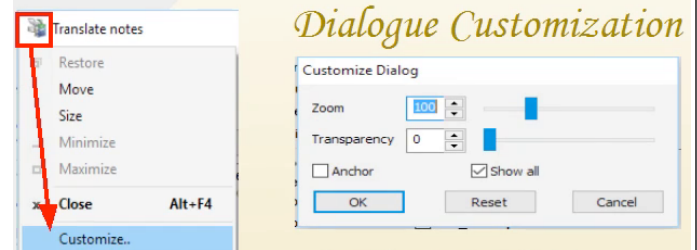
Use the button to “**Setup**” **Auto-Briefs** for a dialogue to control how many Suggestions, Reminders, Requests, etc. can be shown. You can also pick a larger font so that briefs will stand out a bit more.

4) You can make your **Info Bar wider or narrower**, whatever works best for your computer screen. Just use your mouse to hover over the right edge of the info bar. When the pointer turns to a double-headed arrow, hold down the left mouse button and you can drag left (narrower) or right (wider), then release the mouse button when the Info Bar has the width you like.



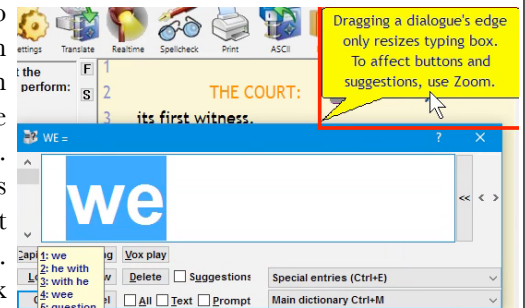
5) Eclipse offers **6 toolbars** that you can customize (in the “Tools” menu) so they contain the icons you like to use. Toolbar icons can be large or small, with or without text labels, as you wish. You can also use the mouse to grip the edge of a toolbar and drag it so that it becomes “undocked.” At that point you can position the toolbar vertically along the edge of your screen or even drag the toolbar outside of the Eclipse program window. This could give you more room to display documents inside the program window. So many possibilities.

6) Most **dialogues can be customized**, if you click on the icon at the upper-left edge, so you can easily adjust the **Zoom** and even the **Transparency**. Each



dialogue remembers how you customize it. I also like to “**Anchor**” many dialogues in the upper-left corner of my screen. If I move a dialogue to a different spot on the screen, Eclipse remembers that new position for me.

7) The **Globaling** dialogue needs special mention. If you want to make it easier to read, do **NOT** use the mouse to drag down the bottom edge of the dialogue. That makes only the text box bigger. Instead, click on the icon in the upper-left corner of the dialogue, select “**Customize**”, then “**Zoom.**” **Every button will be larger, plus the Global Magic suggestions will be much easier to read.** Also, if you are no longer seeing all the buttons on a dialogue, be sure to put a check next to “**Show all.**”



If you like these suggestions, share them, please.

Upcoming Eclipse Workshops by Keith Vincent

To open 2020, Keith will be offering one-day Eclipse workshops in San Francisco (Jan. 18th), New Orleans (Feb. 29), Nashville (March 28), and Chicago (April 18).

These are small-group workshops (a maximum of about 30 participants per class), that cover the most important enhancements in Eclipse 9, with great tips for

getting more from features introduced in Versions 5, 6, 7, and 8. Classes run from 9:00 to 4:30 (with a 90-minute lunch break) and are eligible for 6 hours of credit.

The workshops tend to fill up quickly, so it’s best to contact Keith directly to check availability. The e-mail address is 4kvincent@gmail.com, or you can check by phone at 281-908-4777. Register without delay!

The information contained in this document represents the current views of Keith Vincent and Wil Wilcox and those who submit articles on the issues discussed as of the date of publication. Market conditions change and, thus, after the date of publication, e-Power Video Tutorials cannot guarantee the accuracy of any information herein. We regret that we cannot answer individual questions nor can we consult on problems or purchasing decisions. Information in this document is provided “as is,” without warranty of any kind, expressed or implied, including but not limited to implied warranties of merchantability, fitness for a particular purpose, and freedom from infringement. The user/reader assumes the entire risk as to the accuracy and use of this document. This document may not be redistributed without permission. All trademarks acknowledged. Copyright, e-Power Video Tutorials, 2019.