



e-Power Video Tutorials presents:



e-Tips Newsletter

In this Issue

Keith Vincent - p. 1

**A Feature, Not a Bug:
Enable Output**

Wil Wilcox - p. 2

**Boost/Audio Webinar
Follow-up**

Keith Vincent - p. 3

Dynamic Index Locations

Upcoming Webinars

Keith Vincent
“Eclipse Indexing”
Friday, May 20, 2022
3 hours (Rules/Ethics)
“Exploring Eclipse 10”
Saturday, May 21, 2022
7 hours

Eligible for 1.0 CEU
(Pre-approved by Texas JCCB)

Curated Webinar Bundles

We've offered dozens of great webinars since 2007.
 Check out our catalog:
[EclipseWebinars.com/
webinars_curated_bundles.php](http://EclipseWebinars.com/webinars_curated_bundles.php)

Advantage Software
Tech Support
24/7/365
1-800-800-1759



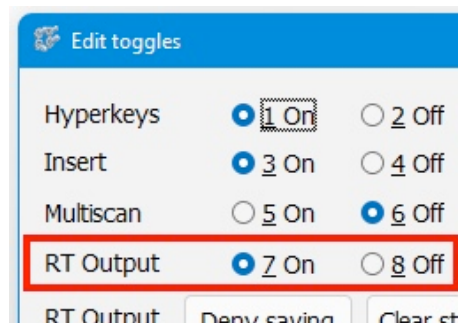
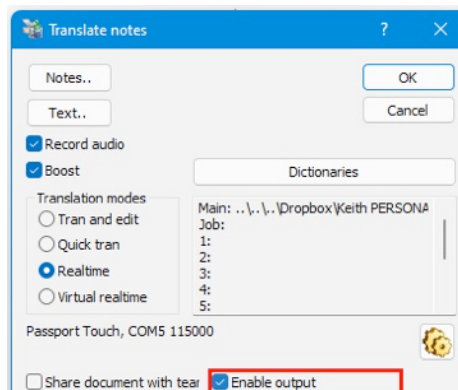
Keith Vincent

A Feature, Not a Bug: “Enable Output”

A couple of times recently, I've been contacted by **Eclipse users who were able to start realtime translation but NOT able to output to clients or to the CART window.** They did not seem to have changed their Eclipse settings, so was it a new security hurdle imposed by a Windows 10 update?

Well, it was **a user-requested change that was made in Eclipse Version 9.** At the “Translate Notes” dialogue, previous versions always defaulted to having “Enable output” turned ON. As soon as you would start realtime translation, you would be outputting to Bridge Mobile or another client program, or the CART window, or Closed Captioning, etc. **As of Version 9, Eclipse would remember if you liked to start translation with “Enable output” turned OFF.** In that case, you could **open the “Edit toggles” dialogue when you were ready to turn realtime output ON.**

Why do I mention this? Well, it's a feature, NOT a bug. If you start realtime translation but your text is not appearing on client screens, captioning screens, or in the CART window, open the **Edit Toggles dialogue (Shift+Alt+E)** and turn “RT Output” ON. Also, the next time you're at the “Translate Notes” dialogue, see if there's a check next to “Enable Output”.



Boost/Audio Webinar Follow-up

Wil Wilcox



In my recent webinar featuring Eclipse 10 Boost, I mentioned some hardware that I use. I featured an audio interface, the Motu M2, that really enhances the accuracy of Boost.

You may ask what is an **audio interface**? Simply put, it is a multi-channel audio input and output device that plugs into your laptop by USB and enables you to use professional microphones for your audiosync. You can also plug in headphones or external speakers into an audio interface for higher quality audio playback than you will get from the speakers on your laptop. Correct usage of an audio interface with professional microphones will supercharge the power of Eclipse 10 Boost to enhance your translation.

I'd like to further detail some of the items that I use and wholeheartedly recommend.

First, there is the **Mr. Power Microphone Stand Rack Tray Holder**. I use this to place my audio interface on the tripod below my steno machine. The small size (7.8" x 5.5") is very lightweight and perfect to mount on your tripod below your writer. If you do not have an audio interface, you can use the tray holder for your cell phone, digital recorder or tablet. It has "limited" availability right now from Amazon for \$14.99. Be sure to order the small tray. I think the large tray is too cumbersome and heavy.

Then there is



my recommended **audio interface, the Motu M2**, which retails for approximately \$199.00 and is sometimes in very limited quantities. If you are unable to find the Motu M2, get the Motu M4, which has more bells and whistles than the M2.



The Motu M2 and M4 have been HUGE sellers for use with Zoom meetings during the pandemic and are often sold out for MONTHS at a time. Order yours now. Either of these will more than get the job done. These audio interfaces make crystal-clear audiosync recordings that are truly amazing for both in-person jobs as well as remote assignments.

We also looked at **two professional boundary microphones, the Shure MX393/O**, \$254.00, and an even **more compact version, the MX391/O**, \$203.00. The "O" stands for "omnidirectional" which is important. In my opinion these Shure microphones cannot be beat for depositions, arbitrations or even court. One thing I failed to mention which may come up especially in court is that if you place one of these extremely sensitive microphones right next to another microphone, speaker or monitor playing audio, it may cause loud feedback. Be careful about that. However, in many depositions with videographers, I have not had an issue with feedback from these whatsoever. They are so powerful they may even pick up people speaking from outside the room. Just turn the sensitivity down if you need.

(Continued on page 3)

Audio Interfaces for Court Reporters

(Continued from page 2)

We also talked about the **Rode Wireless Go II wireless system and the Sound Professionals Model 6 Plus USB soundcard with built-in mics**. Please see e-Tips 181 and 155 for more information on these (at www.kvincent.com).

Thank you to everyone who attended my webinar featuring Eclipse 10 Boost. There were many positive comments such as: "You explained it clearly, in a step-by-step fashion, and gave such good real-world examples of how it could be helpful and did a wonderful job of highlighting why Boost is a reporter tool and not a

reporter replacement." And from another attendee: "I took your seminar this week. It was great. Your passion for this comes through and it is infectious."

Your kind comments are very much appreciated. **You still have the chance to see this webinar. The recording is available at EclipseCat.ocm**. And if you are interested in learning more about using the Motu audio interfaces and professional microphones with Eclipse 10 Boost, **I will have a group training session via Zoom on Saturday, April 2nd, 2022, at 9am PT (12pmET)**. E-mail WNRWilcox@gmail.com for more details.

Dynamic Indexing Locations with Eclipse v10

A great new feature in Eclipse version 10 that is also one of the easiest to use: Dynamic Indexing Locations. In User Settings, Document, Advanced, you should see that the box next to "Dynamic Index Locations" has a check in it. No need to change that.

Let's say you have finished editing your transcript and have sent it to your proofreader and it comes back with a small correction that needs to be made. However, adding just that little bit of text causes an indexing

command that was at the bottom of page 24 to move over to the top of page 25.

With Eclipse 10, the page reference on your index page is automatically updated. In this example, it would refer to page 25 instead of 24.

As long as you have indexed your transcript using Eclipse v10, the page references in your indexes will be automatically updated if info moves from one page to another.

Keith's May 20-21st Eclipse Mega-Webinar

Two years ago, Keith offered 10 webinar hours designed to replace a full-day workshop he had scheduled for Houston. Ten hours is a lot, but it's what's required in Texas and elsewhere. Even without a Covid lockdown, another Mega Webinar is a great way to provide some in-depth training without the expense and inconvenience of travel.

There are 2 parts to this Mega-Webinar, so you can sign up for one or both parts.

On Friday, May 20th, from 7 to 10 pm EST, Keith will present a class devoted to automatic indexing with Eclipse. The fee for the three-hour class on Friday is **\$100**. (For students, it's \$50.)

On Saturday, May 21st, Keith will present a 7-hour class to explore Eclipse 10 and offer helpful tips that apply to previous versions of the software. With mid-morning and mid-afternoon breaks, plus a lunch hour, the class runs from 10 a.m. to 6 p.m. EST. The fee for the seven-hour class on Saturday is **\$225**. (For students, it's \$100.)

The total fee is reduced to \$300 if you are attending both Friday and Saturday.

The program is pre-approved by the Texas JCCB (including 3 hours for Rules/Ethics), but it also qualifies for NCRA, NVRA, and other entities.

For registration: 4KVincent@gmail.com or call Keith at 713-429-5473.

The information contained in this document represents the current views of Keith Vincent and Wil Wilcox and those who submit articles on the issues discussed as of the date of publication. Market conditions change and, thus, after the date of publication, e-Power Video Tutorials cannot guarantee the accuracy of any information herein. We regret that we cannot answer individual questions nor can we consult on problems or purchasing decisions. Information in this document is provided "as is," without warranty of any kind, expressed or implied, including but not limited to implied warranties of merchantability, fitness for a particular purpose, and freedom from infringement. The user/reader assumes the entire risk as to the accuracy and use of this document. This document may not be redistributed without permission. All trademarks acknowledged. Copyright, e-Power Video Tutorials, 2022.