



e-Power Video Tutorials presents:



e-Tips Newsletter

In this Issue

Keith Vincent - p. 1

Fully Integrated Connection Magic in Eclipse 10

Wil Wilcox - p. 2

Unglobal and Dictionary Unmerge



Keith Vincent

Fully Integrated Connection Magic in Eclipse 10

Eclipse v6, back around 2013, saw the introduction of Connection Magic features -- keyless licenses, Bridge Mobile for realtime clients, and eventually Team Editing. Each new version since then has simplified and improved these features, and the trend continues in Eclipse 10.

For remote connections, you would simply need internet access; but internet connections can be spotty. Indeed, a “local” solution is more reliable for clients or team editors who are within WiFi range, but there were several steps needed to bypass the internet. As of Eclipse v8, you could simultaneously use an internet connection for remote clients and a local connection for clients in the room with you.

A “local” setup required extra software (Connection Magic Local) and extra hardware (a portable router). Eclipse 10 removes these requirements and makes everything much simpler. This is part of what I will explain in my January 23rd webinar.

By default, the Eclipse 10 installer adds Eclipse Services to your computer and it **offers to install Connectify** as well. **Eclipse Services replace Connection Magic Local**, so you no longer have to install the CM Local program and remember to turn it on. It **also handles the connection to Google Speech** if you are using Audio AI Boost (“Boost”), which I described in e-Tip #175.

Connectify allows your computer to act as a WiFi hotspot, so you do not need to set up a router in order for nearby clients and team editors to connect to your realtime transcription. If your computer is connected to the internet, you can “Share internet” so that the folks who are connected to you are not deprived of the internet.

Let’s take a closer look at the “Session settings” dialogue that opens when you’re connecting to Bridge/Mobile or Team Editing.

(continued on page 3)

Join us!

Exploring Eclipse 10, a 4-hour LIVE Webinar by Keith Vincent

January 23, 2021

Start times: 12:00 pm Eastern
11:00 am Central
9:00 am Pacific
6:00 pm U.K.

Earn up to .4 CEU

Register by e-mail: 4kvincent@gmail.com or call Keith at 713-429-5473.

Curated Webinar Bundles

We’ve offered dozens of great webinars since 2007.

Check out our catalog:

EclipseWebinars.com/webinars_curated_bundles.php

Advantage Software

Tech Support

24/7/365

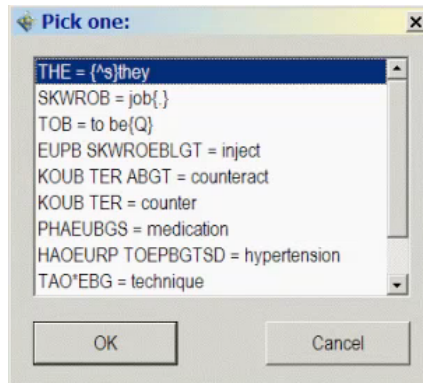
1-800-800-1759

Unglobal and Dictionary Unmerge

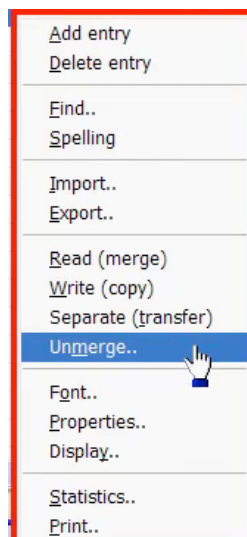


Here are two Eclipse features that are NOT new, but they can be very useful.

Unglobal (Shift+Ctrl+G) brings up a list of steno-based globals from your current editing session. If you pick one of these items and press OK, then it is as if the global had never occurred. Your text and your dictionary go back to pre-global condition. This is NOT for text-based globals, but it does work for steno-based Main, Job, and Trash globals.



Unmerge is a function offered when you are in a dictionary. Let's say that you are in your Main dictionary and you accidentally read in the contents of a job dictionary. **Oops**, you could use the Undo command (Ctrl+Z) as long as you had not closed Eclipse; but what if you had closed the program before realizing your mistake. Now your main dictionary would contain hundreds of entries that do not belong there. **Unmerge is an option when you right-click within a dictionary.** At that point you are shown a list of your dictionaries so that you can select the name of the dictionary that you want to unmerge.



Unmerge is not just for recovering from accidentally merging dictionaries. You can think of it as a special, powerful dictionary filter. When you are in a dictionary and you use the Find/Replace command (F5 or Hyperkey f), there are lots of ways you can filter the display. For example, in the "Text shortcuts" list you could ask Eclipse to show only the

entries that are conflicts in a single dictionary. What you cannot do from this list is ask Eclipse to filter out the conflicts between two dictionaries. That is what "Unmerge" can do; it compares two dictionaries.

When you use Dictionary Unmerge, Eclipse is only looking at the "Steno" part of each dictionary entry. Let's say that your main dictionary contains an entry for steno TPHUB defined as the conflict \number\No.{#N} and that conflict resolves very well. It helps you get better translation and it reduces your editing. Well, suppose a colleague offers you a dictionary in which TPHUB is defined as "number". It's not a conflict, and you do NOT want to accidentally overwrite the good conflict in your main dictionary.

BEFORE you merge dictionaries, you could open your colleague's dictionary, right-click, select "Unmerge", and then pick your MAIN dictionary. At that point Eclipse would delete any entry in the dictionary that your colleague gave you if that same steno was already defined in your main dictionary. In this case, the TPHUB entry in your colleague's dictionary would be deleted because you already have TPHUB defined in your main dictionary.

Of course, in the "Edit" section of User Settings, there is an option to "Detect conflicts." This would alert you anytime you are about to global some steno that has already been defined in your dictionary. You'd be asked if you want to keep the old entry, overwrite it, or create a conflict. That can be a tedious process when there are a large number of entries that are being detected. Unmerge can remove the nuisance entries before you even have to detect a conflict.

Keep in mind that Unmerge will not restore an old entry that had gotten overwritten by something that you merged in. If you are trying to get back the main dictionary that you had, the best way to do that would be to Revert to one of the 10 dictionary backups that Eclipse creates automatically. As usual, there's a Visualizer that shows how to do that.

Fully Integrated Connection Magic in Eclipse 10

(Continued from page 1)

The first thing you see are **two checkboxes, for “Internet” and “LAN.”** For simultaneous output, just check both boxes.

There’s also a box to have Eclipse “Generate email link”, so you could draft an email message and press Ctrl+V to paste in an easy-to-use link that would give your clients immediate connection to your transcription.

If connecting to remote clients or scopists, we presume internet and you check the “Internet” box.

You would check “LAN” for a local connection to your client(s) or your team editor(s). It’s equivalent to running Connection Magic Local, but you do not have to install the CM Local program and you do not need to remember to turn that on.

Right below “LAN - settings” is where you can tell Eclipse to use Connectify so that your computer will act as a Wifi hotspot.

When connecting to your Connectify hotspot, your clients look for the name you have typed next to “Create hotspot”, and they need to know the password that you have typed next to “Pwd”. (You would leave these boxes blank if you have been using an external router and want to continue doing so. You are not forced to use Connectify.)

The checkbox for **“Share Internet”** also relates to Connectify. This simply ensures that the folks connected to you will still have internet access.

If you are offering a local connection to Eclipse realtime transcription, you probably will put a check in the box next to **“Host LAN”**. As a freelance reporter, that is what I would do because I am the host for my realtime clients. However, if you are working in a courthouse or some other setting where IT staff has already set up a local area network on which Connection Magic Local is running, then you would not check “Host LAN” because the hosting is already being done for you.

The rest of this dialogue should be familiar to users of earlier versions of Eclipse, so I’ll leave additional explanations to my upcoming webinar.

Exploring Eclipse 10 - LIVE Webinar on January 23, 2021

On Saturday, January 23, 2021, Keith will offer “Exploring Eclipse 10,” a 4-hour LIVE webinar, 12:00-4:00 p.m. Eastern. Hopefully, not too early a start in Hawaii and not too late a stop in the U.K.

If you need NCRA credit by late January, this will offer you .4 CEU. (For Texas, JCCB pre-approval is pending.)

Q&A is important, so this will be a LIVE event (no recording). Dave Stanley and Wil Wilcox will be helping to monitor the questions.

Webinar price: \$150. To register, contact Keith via e-mail (4kvincent@gmail.com) or by phone (713-429-5473).

The information contained in this document represents the current views of Keith Vincent and Wil Wilcox and those who submit articles on the issues discussed as of the date of publication. Market conditions change and, thus, after the date of publication, e-Power Video Tutorials cannot guarantee the accuracy of any information herein. We regret that we cannot answer individual questions nor can we consult on problems or purchasing decisions. Information in this document is provided “as is,” without warranty of any kind, expressed or implied, including but not limited to implied warranties of merchantability, fitness for a particular purpose, and freedom from infringement. The user/reader assumes the entire risk as to the accuracy and use of this document. This document may not be redistributed without permission. All trademarks acknowledged. Copyright, e-Power Video Tutorials, 2021.