



e-Power Video Tutorials presents:



# e-Tips Newsletter

## In this Issue

Keith Vincent - p. 1

**Pop-Ups & AutoMagic Display Options in Total Eclipse 5**

Wil Wilcox - p. 2

**Copying Jobs from Total Eclipse 4 to 5**

Keith Vincent - p. 3

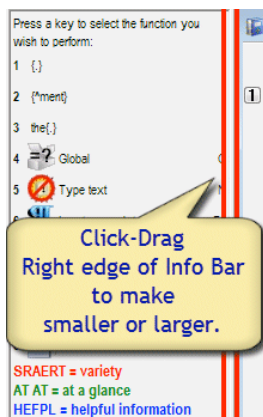
**A Visit to StenoCast Headquarters**



Keith Vincent

## The Info Bar, Pop-Ups and AutoMagic in Total Eclipse 5

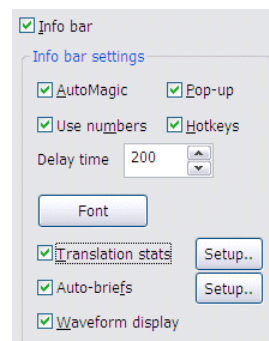
The **Info Bar** is one of the first things you may notice about Total Eclipse 5. It's a multi-purpose display area at the far left edge of the program screen where Eclipse can offer AutoMagic choices each time you move your cursor, but it can also display Auto-Brief suggestions, translation statistics, and an audio recording volume indicator.



The Info Bar and AutoMagic are two things, not one, and so today I'd like to explore them and discuss a number of display options that can help you take full advantage of these great features.

The **width of the Info Bar** may be one of the first things you'll adjust. Use your mouse to hover over the right edge of the Info Bar. The pointer will change to a double-headed arrow, meaning you're ready to click-drag to the left or right to make the Info Bar smaller or larger.

The **"View Toggles"** dialogue controls all other aspects of the Info Bar and AutoMagic. A "View Toggles" button has been added to the "Display" section of User Settings, but you can also use speedkey Shift Ctrl F3 or just right-click on the Info Bar.



The **"Font"** button affects the general display of text in the Info Bar, but there are additional font and color choices for Auto-Briefs. I use a slightly larger font for Auto-Briefs so I can see what steno shortcuts Eclipse is offering during realtime transcription. (A future e-Tip will treat the Auto-Briefs "Setup" button.)

*(continued on page 3)*

**Webinars:**  
**Max Out Translation Accuracy with Total Eclipse™**  
 Part 2: Jan. 19th  
 Michael Starkman  
 More info at [EclipseWebinars.com](http://EclipseWebinars.com).

**Eclipse Users Convention**  
 Feb. 11-13 in Orlando  
 More info at [ESPnetwork.com](http://ESPnetwork.com).

**Advantage Software**  
**Tech Support**  
 24/7/365  
 1-800-800-1759

## Copying Jobs from Total Eclipse 4 to 5



As people make the transition from Version 4 to Version 5 of Total Eclipse, a frequent question is this: **How can I take an Eclipse job that I started in Version 4 and continue working on it in Version 5?** Here are some ideas for you.

You can always use Windows Explorer to **copy and paste**. My old jobs were stored in this location: **C:\Program Files\Advantage Software\EclipseNT\Users\Wil**. My new jobs are in a “Wil” subfolder within a new “Eclipse” folder that gets created inside the My Documents folder. I can just copy and paste.

Also, you could set up an “Auxiliary” path within Total Eclipse 4 so that you could open your File Manager and easily send files to Total Eclipse 5. Here’s how. Open the User Settings. In the bottom-right corner of the “User” tab, click on the “Advanced” button. Then click on the “Auxiliary” button. Windows will open a dialogue so that you can browse to any folder on your computer.

At that point on my **Windows XP** computer, I could scroll to the very top of the list of folders and click on “My Documents”, then “Eclipse” then “Wil.” OK.

On my **Windows 7** computer, the path would be a different. I’d scroll to the top of the list of folders and click on “Libraries”, then “Documents”, then “My Documents”, then “Eclipse”, then “Wil.” OK.

As you may know, Total Eclipse 5 uses a new kind of text file that offers increased reliability and multiple automatic backups. Dictionaries, however, have not changed. Thus, you could have both **Version 4 and Version 5 point to the same main dictionary**.

For example, Keith tells me that he’s now using Total Eclipse 5 most of the time, but he uses the old version if he’s part of a team that includes reporters who have not transitioned from Total Eclipse 4. His Version 4 settings point to his main dictionary in Version 5, so he maintains just one main dictionary.

How to do this? In Version 4 of Total Eclipse, go to the “User” section of User Settings and click on the “Dictionaries” button. Click on the line next to “Main” and then click on the “Change” button. You can then browse to your dictionary in your Version 5 jobs folder. Having done that, you could use either the old or the new version of Eclipse, without having to maintain two main dictionaries.

### e-Power Video Tutorials: e-Tip Special

Please use this order form to take advantage of sale prices (ends January 31, 2011).



**Description**  
**Keyboard Magic**  
**Translation Magic**  
**Shipping & Handling, \$5 per disk**  
*(Outside USA, add additional \$10)*

**Sale Price**  
 \_\_\_\_\_ **\$59.95**  
 \_\_\_\_\_ **\$59.95**



**Total: (Checks only, please!)**

**Note: We cannot ship orders that do not include shipping/handling fees.**

**Name:** \_\_\_\_\_

**Address:** \_\_\_\_\_

**City/State/Postal Code:** \_\_\_\_\_

**Telephone:** \_\_\_\_\_ **e-mail:** \_\_\_\_\_

**Mail to: Keith Vincent, 728 Tirrell Street, Houston, Texas 77019**  
**For more info on e-Power Tutorials, visit: [www.KVincent.com](http://www.KVincent.com).**

## A Visit to Headquarters StenoCast – Keith Vincent

While in San Diego to present a Total Eclipse 5 seminar, I was able to visit StenoCast headquarters. It was an opportunity to see two very impressive new products: the **Realtime TV** (Transcript Viewer) and a **wireless mic system called Audio2Me**.

The Realtime TV was announced at the NCRA Summer 2010 convention in Chicago. The **RTTV will have a 7" touch screen that will work with the CaseView protocol or, in the very near future, the Bridge refresh protocol.**

Because of the larger screen, the price on the RTTV will be a bit more than originally announced, but still less than \$400. That's less than you pay for some netbooks, especially given that the RTTV has an embedded Bluetooth receiver. Plus, there's no software to load and the RTTV is more portable than a netbook. Each one weighs about half a pound, and I figure I could easily carry three or four of them in my steno case.



The StenoCast folks designed the RTTV to meet the needs of our clients who just want realtime display, without complicated software or a big machine in the way. I find the display on the RTTV quite clear. Moving your finger along the screen in an up or down direction lets you scroll through the text. A quick touch of the screen will also mark a spot, and there's a way to quickly review the spots that you have marked.

The **RTTV's built-in lithium battery will work at least 8 hours** on a full charge, but you can always plug in the AC adapter if you have longer days. **Like the StenoCast EzReceivers, each RTTV is pre-matched to a specific RED transmitter. Just turn on the RTTV and it's ready for realtime display.** Very friendly.

I think the first RTTVs will be delivered around March, but any delay just means the product has been further improved. That being the case, I think I'll put off buying more netbooks for realtime work.

The other product that I'm really eager to get is a **StenoCast wireless microphone system called Audio2Me**. It was also announced at the Chicago convention and has been greatly improved because of suggestions from future users.

The original idea was one microphone that could wirelessly transmit to a little receiver plugged into your computer. The current **Audio2Me is two mics**. That makes the system much more powerful.

**Each mic is powered by a built-in lithium battery that can work at least 25 hours** on a full charge. That should be enough for two or three long days of work. To recharge, you can either connect to a USB port on a computer or use the accompanying AC adapter.



The Audio2Me **transmitter can be placed up to 75 feet away from the receiver**. That should be great for courtroom or arbitration settings. The audio is very clear and the system compensates automatically for whispers and background noises.

Another great thing about this wireless mic system is that you can connect in two ways. **Using the USB connector lets you take advantage of an excellent sound card that's built into the microphone.** That's especially helpful if, as is so often the case, the sound card on your computer is not so good. There's also a **mini-plug to let you connect to the microphone input of your computer or steno machine.**

That's worth emphasizing: the Audio2Me could be used with your steno machine if it records audio. It's not something that can only be used for recording audio on your computer.

If you'd like additional information on these products, visit StenoCast.com.

Two great new products for the new year. Definitely something to look forward to.

## The Info Bar, Pop-Ups and AutoMagic in Total Eclipse 5

(continued from page 1)

The checkboxes on the View Toggles dialogue make the display very flexible. Thus, you might not want translation statistics to appear in the Info Bar, yet they could still appear in a separate window as they have traditionally. You might also want to hide the Hotkeys in the AutoMagic display because they take up a bit of space and you don't need to be reminded of them.

Perhaps you have a small screen and do not want to see the Info Bar but do want to use AutoMagic. If so, uncheck "Info Bar" but check both "AutoMagic" and "Pop-up". Your

AutoMagic choices will then appear in a small yellow pop-up display close to your cursor position.

1 2,009  
2 \$2,009  
3 2009  
4 20/09  
5 20:09  
6 MMIX  
7 Convert numbers  
8 Remove punctuation  
9 Change punctuation to...

2009.

The AutoMagic pop-ups try to take up a minimum of space, partly to speed up recognition of choices. Thus, the pop-ups do not display the icons or HotKeys that you might see in the Info Bar. Also, they only show a maximum of nine choices since Choice 0 on the Info Bar is usually "Block Mark". (See e-Tip #105 for a discussion of options relating to how "Use numbers" to select AutoMagic choices.)

I use the Info Bar at all times, and also **I use AutoMagic pop-ups when I'm editing at home so that I don't have to move my eyes to the Info Bar in order to see AutoMagic choices.** It's all about speed, and that's where the "Delay" setting comes into play. You can **control how quickly the**

**AutoMagic choices are displayed. The default delay is 1/2 second (500 milliseconds), but I prefer the minimum setting of 200.**

An AutoMagic pop-up will disappear after you've left your cursor on a word for a few seconds. However, I've found it handy to have a **macro to temporarily disable the AutoMagic pop-ups.** To run that macro, I use **speedkey Shift Ctrl F6.** I'll make the macro available on the e-Tips page of [KVincent.com](http://KVincent.com).

Here are two other Info Bar behaviors that I don't want to forget to mention. **During realtime translation, you can click anywhere on the Info Bar in order to open the Auto-Brief dictionary.** This makes it easy to see all the suggestions that have been offered and to delete some that you do not find helpful.

Also, **during realtime transcription, the AutoMagic choices will automatically hide themselves whenever your cursor is positioned at the end of the document, following along as you write.** That frees up space for the display of Auto-Briefs.

**What if you have your text window split into an upper pane and a lower pane during realtime transcription?** Well, the lower pane will automatically follow along as you're writing. You would then want the upper pane to NOT "follow always" so that you could edit up there during pauses; and when your cursor moves to a spot for editing, the AutoMagic choices would automatically appear and even be accessible from the steno keyboard.

**Hoping you find these tips helpful, Wil Wilcox and I wish you every success and happiness in 2011 and in the new decade!**

### Disclaimer:

The information contained in this document represents the current views of Keith Vincent and Wil Wilcox and those who submit articles on the issues discussed as of the date of publication. Market conditions change and, thus, after the date of publication, e-Power Video Tutorials cannot guarantee the accuracy of any information herein.

We regret that we cannot answer individual questions nor can we consult on problems or purchasing decisions.

Information provided in this document is provided "as is," without warranty of any kind, expressed or implied, including but not limited to implied warranties of merchantability, fitness for a particular purpose, and freedom from infringement.

The user/reader assumes the entire risk as to the accuracy and use of this document. This document may not be redistributed without permission. All trademarks acknowledged. Copyright, e-Power Video Tutorials, 2011.