



e-Power Video Tutorials presents:



# e-Tips Newsletter

## In this Issue

Keith Vincent - p. 1

### Eclipse 9:

### Google Translate Support

Wil Wilcox - p. 2

### LTE-Enabled Computers

## Eclipse Webinars

### Introducing Eclipse 9

Jeremy Thorne, Michael Starkman, and  
Keith Vincent

September 13, 20, 27, 2018

Save the dates!

### Curated Bundles

We've offered dozens of great webinars  
since 2007.

Check out our catalog.

[EclipseWebinars.com/  
webinars\\_curated\\_bundles.php](http://EclipseWebinars.com/webinars_curated_bundles.php)

## Eclipse Workshops by Keith Vincent

July 28 - Chicago

August 18 - Houston

September 29 - Los Angeles

October 6 - Washington, DC

November 10 - Orlando

Classes limited to approximately 30 persons.

To check availability,  
[4KVincent@Gmail.com](mailto:4KVincent@Gmail.com)

## Advantage Software

### Tech Support

24/7/365

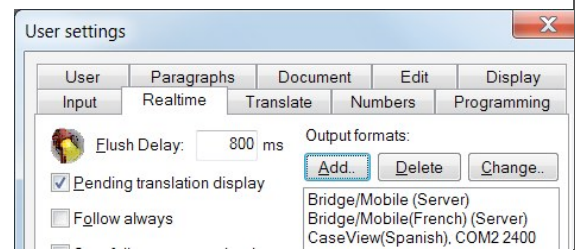
1-800-800-1759



Keith Vincent

## Eclipse 9: Google Translate Support

With Eclipse 9, you can write/dictate in your native language and output in one or more other languages, taking advantage of Google Translate. You do need internet access so that Eclipse can send text to Google for translation; but the output does NOT require the internet, nor Connection Magic, nor Bridge Mobile. You could even use old-fashioned serial cables to connect to clients using legacy software like CaseView or Summation.



To set this up, go to Eclipse User Settings, Realtime, Output formats, Add. In the lower-right, you'll see "Language" and next to it "default". That would mean your native language, but open that list to see what Google Translate supports. It starts with Afrikaans and ends with Zulu. The quality of the translation is constantly improving as it's used around the world. I was very impressed by the results in French, Italian, German, Spanish and Dutch. However, Latin seemed spotty, so I gather the jobs of translators in Vatican City won't be threatened anytime soon.

Of course, there's a Visualizer movie for this, and you'll see when you write a word, it is not instantly translated. Eclipse has to wait a bit in order to send units of thoughts to Google for translation. By default, Eclipse will automatically send to Google at the end of each paragraph, but you can use the {FLUSH} command to push text out faster when a full thought is just part of a long sentence or paragraph. You could also modify how a period or question mark is defined in your dictionary: {.}{FLUSH} {?}{FLUSH}

In the "Output format" dialogue, "Force Margins" is ON automatically since the line-wrapping in your original text can't really be used for the translated text. The default right margin is 32. Set it to whatever works best on the displays your clients will use.

(continued on page 3)

## LTE-Enabled Computers: Wave of the Future



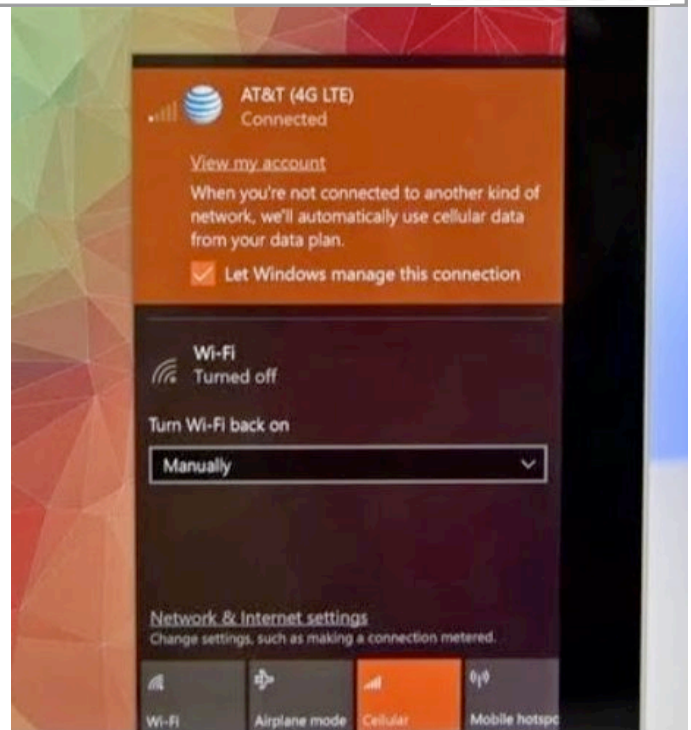
Today we use smartphones and laptops for similar things. Email, texts, social media, etc. Our cell phones are even ahead of our laptops because they are always connected to the internet just about anywhere while laptops, for the most part, are still dependent on wifi. Of course, of particular interest to court reporters is that you cannot do realtime with a cell phone.

**The main reason that I love the LTE-enabled computers is because I regularly use Eclipse Connection Magic with my scopist (“Team Editing.”) If I’m pretty sure that the transcript will be ordered, my scopist will edit using Connection Magic while I’m doing realtime.** Friday night I got an expedited transcript request for that day’s job. Going in, I knew that they’d want it expedited, and when they actually ordered, it was not a problem because my scopist had already finished it. We have found that Connection Magic works perfectly when you have a solid Internet connection. When we’ve tried to use Connection Magic with a poor internet connection, that’s the only time we have had any issues.

Sure, there have been LTE-enabled laptops before. They’ve primarily been on models that businesses use. Also, many people may not want to pay for the extra data connection. Sure, we’ve been able to get around this by using our cell phones as hotspots. Also, there are many public wifi locations available. **The big new thing in 2018 is the wider availability of LTE-enabled laptops. PC manufacturers including Lenovo, Dell, and Microsoft are now releasing laptops with optional built-in LTE.**

My favorite is the **Lenovo ThinkPad X1 Carbon (starting at \$1,500), now available with LTE mobile broadband.** The X1 Carbon is the perfect choice. It has an 8th-generation Intel processor and weighs only 2.49 pounds. You can get an Intel core i5 or Core i7 CPU, up to 16 GB RAM and up to 1TB SSD hard drive. It has a 14-inch display. I recommend the matte anti-glare display, not the glossy, to minimize reflections and glare from florescent lighting. Of course, the amazing ThinkPad keyboard is another plus.

Other LTE laptops to consider are the **LTE version of the ThinkPad X1 Yoga** (starting at \$1,600). **Microsoft has the Surface Pro LTE** (only 1 USB port.) A few others available are the Intel Core i7 **Acer Swift 7** and the **Dell Inspiron 5280 2-in-1**. I honestly



cannot recommend the Acer or the Dell because I have no personal experience with either, so you’ll need to carefully check those out. These are just some of the major LTE-enabled laptops. To my knowledge, Apple does not offer LTE broadband on their laptops at this time, although the iPad is available with LTE.

**Warning:** Be careful to choose an **LTE laptop with an Intel processor** if you want to be able to connect to your writer. Qualcomm has released a new chip used in mobile phones that is now going into laptops that they advertise as "always connected." These Qualcomm Snapdragon laptops do not support connecting a steno machine for realtime because the drivers have not been available to the CAT companies for Qualcomm Snapdragon mobile-pc processors. These devices are also referred to as Windows on ARM. Stay away from Qualcomm Windows on Arm. It is okay if your laptop has a Qualcomm modem, but it must have an Intel processor to work with your steno machine. If you get an LTE laptop with either the Intel Core i5 or i7 chip, this won't be a problem.

These new LTE laptops have SIM card slots just like your cell phone. To add this to your cell plan costs an extra \$10-20 per month and typically does NOT require a new contract like a dedicated mobile hotspot does.

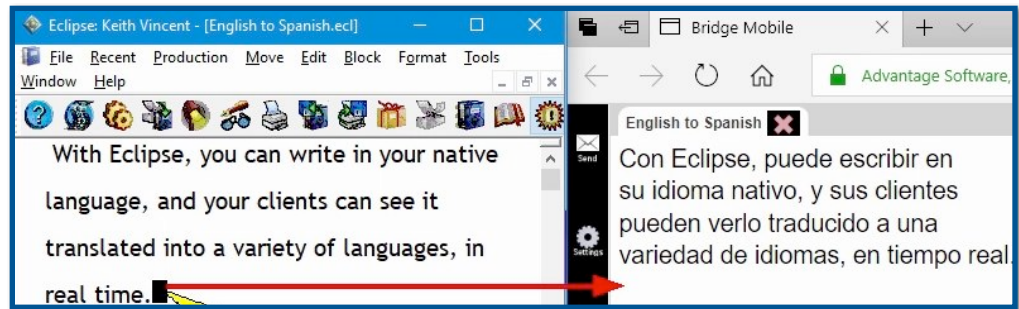
*(continued on page 3)*

## Eclipse 9: Google Translate Support

(continued from page 1)

One more tip. In the upper right of the “Output format” dialogue, you’ll notice “Word flush delay.” Set that at something like 1000000 milliseconds. When I had that set at zero, I noticed that the “Q” and “A” symbols were occasionally lost in translation. Small change, important result.

**Eclipse’s use of Google Translate will be part of the “Introducing Eclipse 9” webinars presented**



**on September 13, 20, and 27 by Keith Vincent, Michael Starkman, and Jeremy Thorne.** (For more information, visit [EclipseWebinars.com](http://EclipseWebinars.com).)

## LTE-Enabled Computers

(continued from page 2)

If you are not expecting to use this a lot or if you want to just check it out before adding an extra line to your cell plan, you can pop the SIM card out of your cell phone and into the laptop for use with Connection Magic or when you otherwise require internet.

You may be thinking that since I can use my phone as a mobile hotspot or connect to public wifi, I do not need an LTE-enabled laptop. However, when you use your cell phone as a mobile hotspot, that really eats up battery life. Your cell phone may even get very hot to the touch. A laptop with LTE doesn't do that. Your laptop will also have a much stronger connection than your cell phone because the LTE antennas in the laptop will be much larger than those in your phone. Also, it is a direct connection, not a secondary source tethered to your

phone. Connection speeds with LTE+, LTE-advanced or gigabit LTE will rival cable internet. With gigabit LTE, you may see download speeds of 400-500 megabits per second, faster than many cable internet connections.

Another important consideration is that public wifi hotspots are notoriously unsafe. My computer was hacked on a public wifi network at the airport, introducing malware that caused me to abandon a perfectly wonderful \$2,500 laptop for court reporting, fearing my transcript and note files being compromised or corrupted.

So what happens with a SIM card in your LTE laptop? You just open your laptop wherever you are and, boom, you're connected to the internet and ready to go. You may be very surprised just how helpful this really is and wonder how you ever managed without it.

## Eclipse Workshops by Keith Vincent

**On July 28th** (Chicago), **August 18** (Houston), **September 29** (Los Angeles), **October 6** (Washington), and **November 10** (Orlando), **Keith Vincent will offer six-hour workshops, “Exploring Eclipse.”** The workshop presents the best of Versions 5, 6, 7 and 8 of Eclipse, as well as **new features in Eclipse 9.** The goal is better translation and more efficient editing.

The class hours are 9-12 and 1:30-4:30 and can qualify as a source of continuing education units.

**Each workshop is set up as a small-group event** (a maximum of about 30 participants) **so no one gets overlooked. If you're interested in attending, it's important to register without delay. Inquire via [4Kvincent@Gmail.com](mailto:4Kvincent@Gmail.com) or call 713-523-6345.**

### Disclaimer

The information contained in this document represents the current views of Keith Vincent and Wil Wilcox and those who submit articles on the issues discussed as of the date of publication. Market conditions change and, thus, after the date of publication, e-Power Video Tutorials cannot guarantee the accuracy of any information herein.

We regret that we cannot answer individual questions nor can we consult on problems or purchasing decisions.

Information in this document is provided “as is,” without warranty of any kind, expressed or implied, including but not limited to implied warranties of merchantability, fitness for a particular purpose, and freedom from infringement.

The user/reader assumes the entire risk as to the accuracy and use of this document. This document may not be redistributed without permission. All trademarks acknowledged. Copyright, e-Power Video Tutorials, 2018.