



e-CourtReporter, LLC
and e-Power Video Tutorials present:



e-Tips Newsletter



Keith Vincent

The CART Window

About 10 years ago, I was part of a group of reporters who volunteered to accompany a gifted, hearing-impaired high school student and provide realtime transcription for him as he attended classes. It's come to be known as **Communication Access Realtime Translation (CART)**, and I have to say it was a very rewarding experience, even if it involved revisiting the zoo that is high school.

In this Issue

Keith Vincent - p. 1

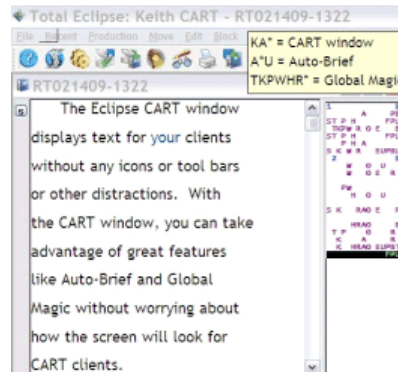
The CART Window

Wil Wilcox - p. 2

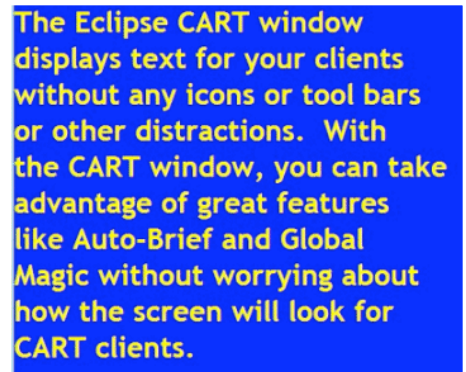
Turtle Beach

Audio Avantage Amigo II

USB Sound Card



Reporter's Screen



CART Client's Screen

Please keep in mind that because of the volume of e-mail we receive and the fact that we are volunteering our time for this free newsletter, we can't routinely answer individual questions by phone or e-mail, nor can we consult on problems or purchasing decisions.

**Advantage Software
Tech Support
24/7/365
1-800-800-1759**

Today a growing number of reporters work as CART providers, so **Total Eclipse 4.3** now offers the **CART window**. An external display can be connected to the reporter's computer. The CART screen offers a clean text display, without forcing the reporter's screen to use huge fonts or to hide steno or auto-brief lists or other valuable features.

I've prepared a Visualizer to show the use of the CART window. You can find it by pressing F1, then searching for "CART window," then clicking on the Visualizer icon that appears on that Help page. I'll also make sure there's a website demo available at KVincent.com.

Start by connecting an external monitor to the reporter's computer. Then go to MS Windows' "Display properties" dialogue, as if to

(continued on page 3)

Turtle Beach Audio Advantage Amigo II USB Sound Card



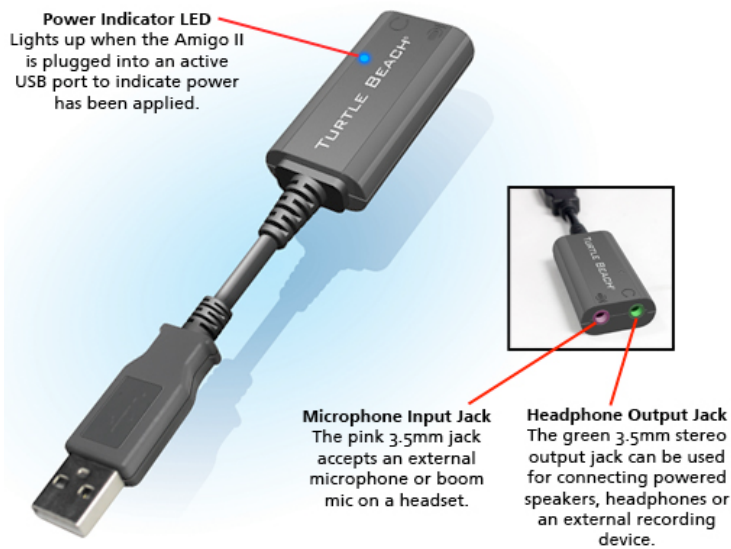
Since court reporters often use their computers for recording audio, it's very frustrating when a new computer's audio recording quality is not great. Also, Windows Vista and Windows 7 have in most cases eliminated microphone monitoring. One of the best ways to address these issues is to use a USB microphone/sound card.

Turtle Beach has recently announced the Audio Advantage Amigo II USB for both Mac and

Windows PCs. At only \$24.95, this is one low-priced option for getting much better sound quality from your computer. I have been very impressed with Turtle Beach sound cards and am will be eager to check out the new Amigo II when it is available. Here's how a 1/4/10 press release described it:

The Amigo II USB sound card adds a stereo output and mic input to a Mac or PC. Because it uses a USB digital connection, the Amigo isolates the audio signal from the noisy electronics inside a PC or laptop to provide higher-quality sound. The stereo output can be used for connecting powered speakers, headphones or an external recording device; and the microphone input can be used for connecting an external microphone or the boom mic on a headset. It's ideal for converting a standard analog headset into is USB headset for programs like Skype.

The Amigo II can be used with your favorite microphone. It does not have a microphone built into it. The Amigo II works with Mac or Windows PCs without the need for external power adapters, special drivers or software. It will be available in January from major US retailers as well as the Turtle Beach web site (www.turtlebeach.com). Turtle Beach products are distributed in Europe by Mad Catz® Interactive, Inc. (www.madcatz.com.)



e-Power Video Tutorials: e-Tip Special

Please use this order form to take advantage of sale prices (ends February 28, 2010).



Description	Sale Price
Total Eclipse Overview	_____ \$59.95
<i>Contains over 200 short Visualizer movies.</i>	
<i>and allows you to earn .6 NCRA continuing education units.</i>	
Shipping, \$5 (Outside USA, add additional \$10)	_____
Total: (Checks only, please!)	_____

Note: We cannot ship orders that do not include shipping/handling fees.

Name: _____

Address: _____

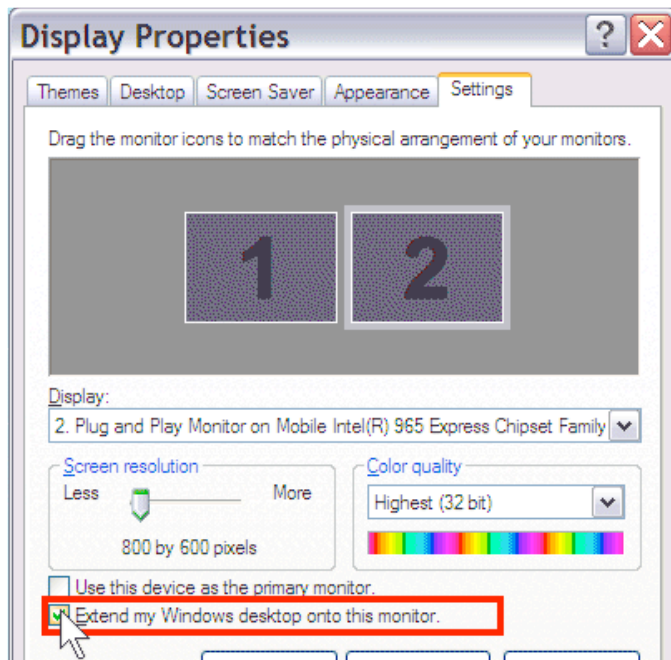
City/State/Postal Code: _____

Telephone: _____ **e-mail:** _____

Mail to: Keith Vincent, 728 Tirrell Street, Houston, Texas 77019
For more info on e-Power Tutorials, visit: www.KVincent.com.

The CART Window *(cont. from page 1)*

to change the display size. As shown below, **Windows detects (1) the notebook's screen and (2) an external display.** So I've selected Display #2 and put a



check in the box to “Extend my Windows desktop onto this monitor.” (See Wil’s e-Tip #79 from July 2008 for more on how to use a second display.)

Having done this, you can move the mouse to the right and it will jump from the reporter’s display to the external display. You’ll have two separate displays that you can use, and the second one won’t be merely a mirror image of the reporter’s screen.

Within Eclipse, go to the “Realtime” section of User Settings and use the button to “Add” an output format. Then drop down to the bottom of the list of output formats in **Total Eclipse 4.3 to choose “CART window.”** You’ll probably also want to go the **“Display” section of User Settings to set the**

background and foreground colors for the CART window.

When you start realtime translation, you’ll notice that **a new “CART window” button will appear on the Windows task bar,** in addition to the normal button for Total Eclipse. Clicking on these buttons lets the reporter’s screen show either the normal Eclipse window or the special CART window; it won’t disturb what the CART client sees on the external display.

You can also adjust the fonts that are used by the CART window. You do not have to use the same fonts that appear on the reporter’s screen. Just click on the “CART window” button of the Windows taskbar. When the CART window is visible, right-click on it. A

“CART settings” dialogue will appear that contains a “Font” button. Use any font, style, or size that your computer offers.

One last step. **At first, the CART window will appear on the reporter’s screen, but you’ll want to move it over to the external display.** Use the mouse to click-drag the CART window to the right, and you’ll see it start to appear on the external display. Once it’s there, you can click-drag an edge of the CART window to make it bigger.

Much of what I’ve outlined here falls squarely in the “set it and forget it” category. So it’s not like you have to go through all of these steps each time you use the CART window.

What I especially like is that the Eclipse reporter’s screen does not have to hide great features like auto-brief because the CART window is a separate display that’s maximized for easy of reading. In addition, we can expect more and more convenient sizes of flat-panel displays, even with wireless connections to the reporter’s computer, and at affordable prices.

Disclaimer:

e-Tips are provided for informational purposes only. The information contained in this document represents the current views of Wil Wilcox and Keith Vincent and those who submit articles on the issues discussed as of the date of publication. Market conditions change and, thus, after the date of publication, e-CourtReporter, LLC, cannot guarantee the accuracy of any information herein.

Information provided in this document is provided “as is,” without warranty of any kind, either expressed or implied, including but not limited to implied warranties of merchantability, fitness for a particular purpose, and freedom from infringement.

The user/reader assumes the entire risk as to the accuracy and use of this document. This document may not be redistributed without permission. All trademarks acknowledged. Copyright, e-CourtReporter, LLC, 2001-2010.